



PERIOD
HOMES



Trueloves Lane
Ingatstone Essex CM4 0NQ
Guide Price £2,500,000

Trueloves Lane, Ingatestone, Essex CM4 0NQ

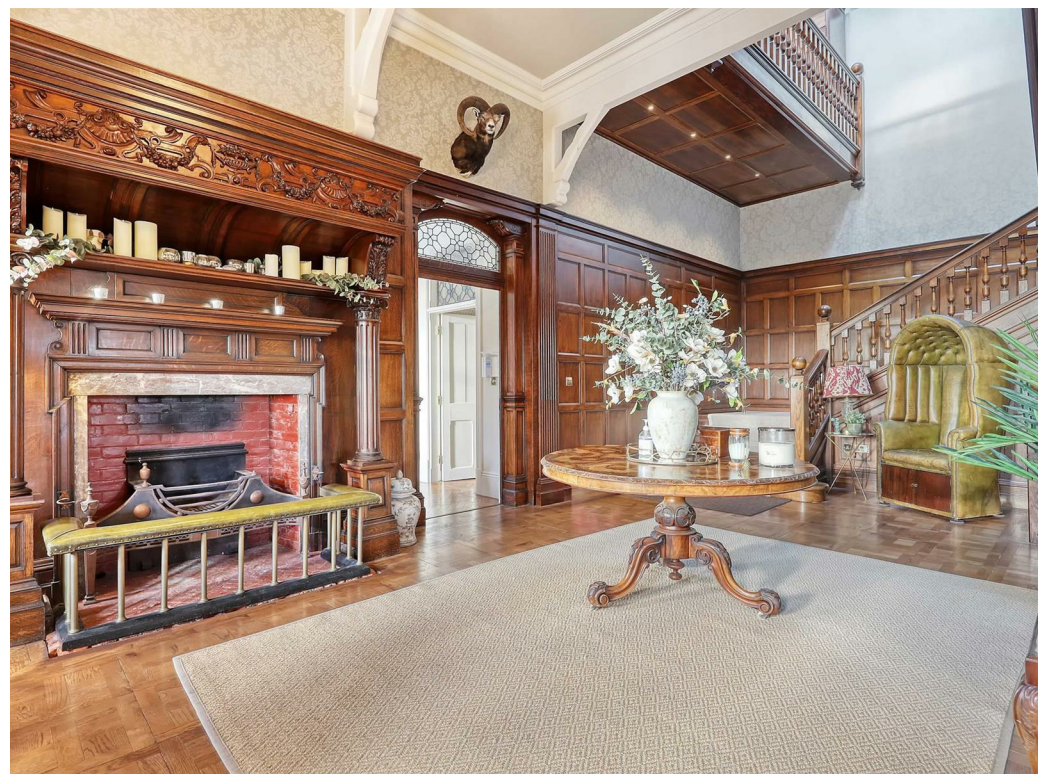
VICTORIAN – Occupying the principal part of this superb neo-Gothic Manor House, 'Trueloves House' was designed by William White in the late 1800's, spanning almost 5,500 sq ft in the delightful countryside of Ingatestone. This remarkable home boasts exceptional ceiling heights of over 4m to the principal areas, with the most divine period features restored to the finest of standards owing to an almost 10-year renovation.

A gated entrance gives access to the sizeable, private driveway, with ample parking around a central island, and a detached double garage, with inviting garden areas spanning the frontage of this classic home. The astounding architecture is enjoyed immediately upon arrival, with yellow and gault brickwork punctuating the expanse of intricately designed red brick façade with stone detailing. The reception spaces are a sheer delight, comprised of a drawing room with bespoke library wall, with large bay window to the front elevation. In line with modern living styles, the kitchen/dining room provides an open-plan living area with wonderful original windows. The kitchen is highly specified and well-fitted in a complementary style. A basement level provides an additional reception area with natural light, ideal as a hobby space, playroom, or cinema room.

The upper floors are equally impressive, with a variety of cleverly arranged staircases and landings giving access to a total of five bedrooms and four bathrooms/en-suites. The first floor commences with a galleried landing connecting to the master suite, which is beyond compare with high ceilings, large original windows, a dressing room, and luxurious en-suite, reminiscent of the finest of hotel suites. The second bedroom with en-suite shower room also features a lounge area, and a utility room is also situated on the first floor, cutting out the stairs from the laundry process...

Moving up to the second level, there are a further three bedroom suites, each enjoying en-suite facilities, and one also enjoying a split level bedroom/lounge arrangement. The architectural merit of this building is boundless, with unparalleled scale and proportions, further enjoyed alongside the modern comforts of underfloor heating, an air source heating system, heat recovery ventilation system, heritage glazing throughout, and fibreoptic broadband already connected. The aspirational living environment at Trueloves House is quiet, secure, and superbly located for access to Ingatestone High Street and mainline station, with direct services to London Liverpool Street in as little as 28 minutes via Shenfield & Stratford.

Note: There is a small service charge (£TBC) paid towards upkeep of the Trueloves entrance road.
Council Tax: Band H







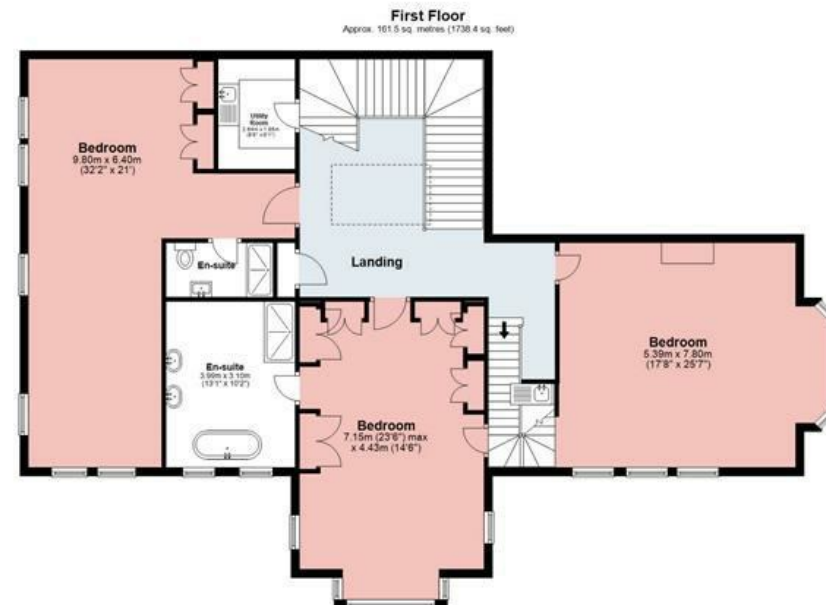
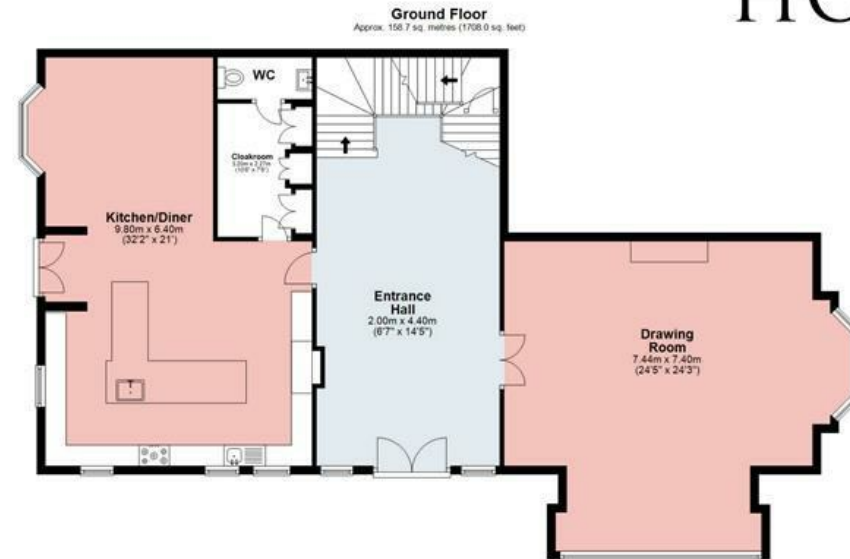
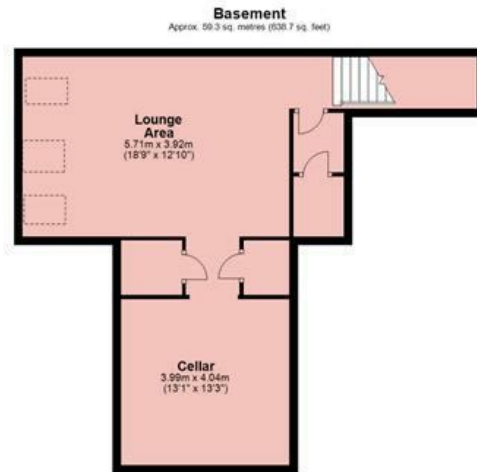


TRUELOVES HOUSE

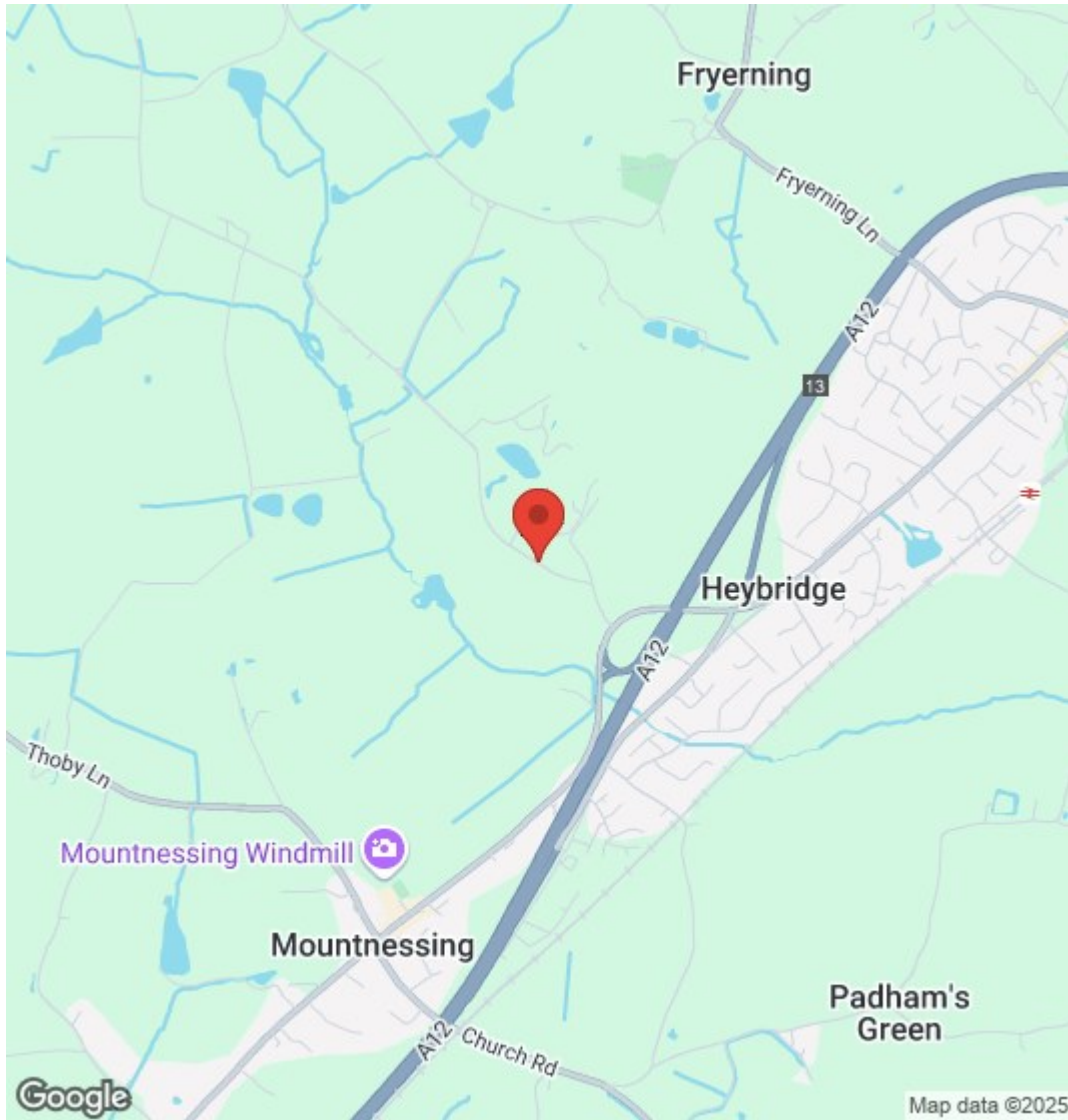
Approx. Gross Internal Area 509.6 Sq M (5485.1 Sq Ft)



PERIOD
HOMES



Measurements are approximate and for illustration purposes only. While we do not doubt the accuracy and completeness, we advise you conduct a careful independent assessment of the property to determine monetary value.



PLEASE CALL 01277 288000 TO ARRANGE A VIEWING
www.periodhomes.co.uk

INDEPENDENT ESTATE AGENTS - VALUATIONS WITH NO OBLIGATION - PROFESSIONAL SERVICE

These particulars do not constitute any part of an offer or contract. All measurements are given as a guide, no liability can be accepted for any errors arising therefrom. No responsibility is taken for any other error, omission, or mis-statement in these particulars.
 Period Homes, a trading style of Walkers Village and Country Homes Limited do not make or give, whether in these particulars, during negotiations or otherwise, any representation whatsoever in relation to this property.

